



Pochins Bridge Road, , Wigston, LE18 4NR

- Executive Style Detached Family Home
- Popular Residential Location with Countryside on your doorstep
- Ensuite to Bedroom One and Modern Family Shower room
- Garage and Driveway
- Separate Dining room
- Four Bedrooms
- Modern Fitted Open Plan Kitchen-Breakfast room
- Enclosed Garden with edged borders and Patio Seating area
- Spacious Living room
- 360 Virtual Tour

£365,000



Pochins Bridge Road, , Wigston, LE18 4NR

DESCRIPTION

Nestled on Pochins Bridge Road in the charming town of Wigston, this exceptional detached family home presents an ideal opportunity for those seeking a blend of comfort and modern living. With four well-appointed bedrooms, including a master suite complete with an en-suite bathroom, this property is perfect for both growing and extended families. The fourth bedroom is currently utilised as a home office, catering to the needs of today's professionals.

The heart of the home is a spacious lounge, featuring a delightful bay door that opens directly onto the garden patio, creating a seamless transition for al-fresco dining and entertaining. The modern, refitted kitchen-breakfast room is a culinary delight, boasting a focal breakfast bar and a separate dining room, making it perfect for family gatherings and social occasions. Additionally, a convenient downstairs WC enhances the practicality of the layout.

The property benefits from an integrated garage and a driveway that provides ample off-road parking for up to three vehicles, ensuring ease of access for family and guests alike. The enclosed garden is a private sanctuary, complete with a patio and a charming pergola seating area, ideal for enjoying the outdoors in comfort.

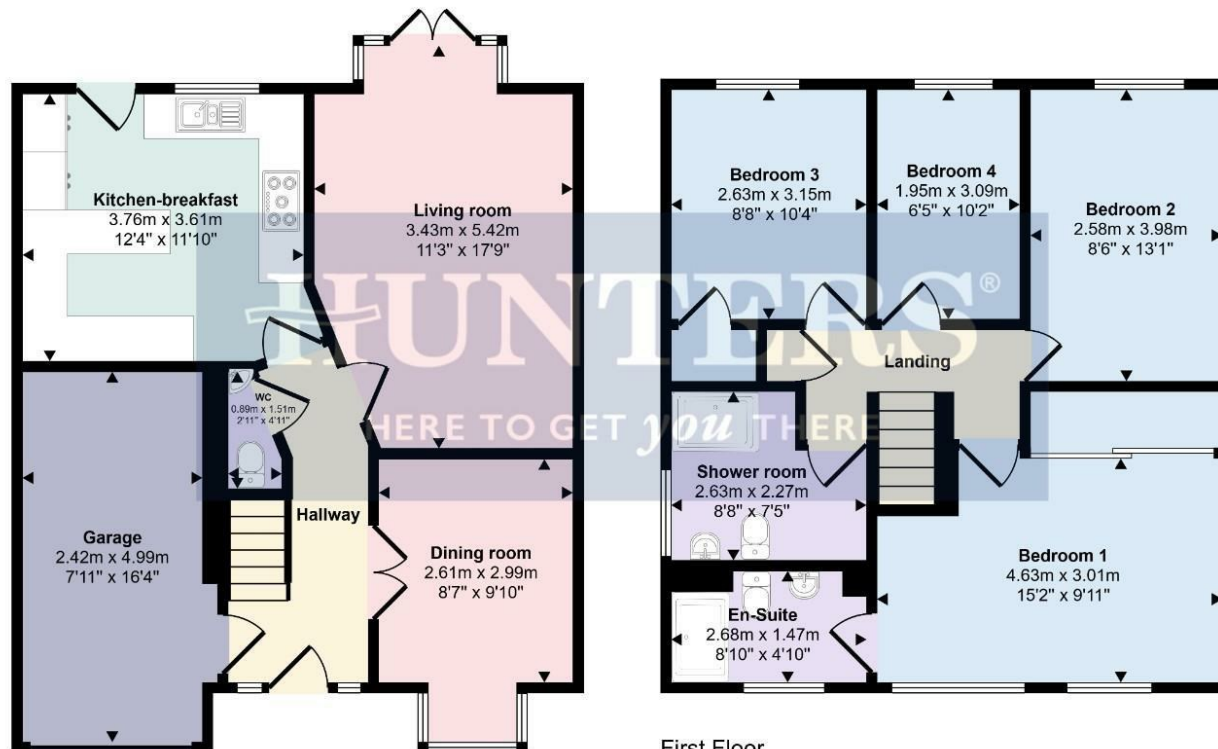
Located within close proximity to local shops, schools, and amenities, this home is perfectly positioned for families who appreciate both convenience and a touch of countryside charm.

For those interested in exploring this remarkable property further, a 360 virtual tour is available. Contact your local Hunters estate agents in Wigston to arrange your viewing today and discover the potential of this splendid family home.





Approx Gross Internal Area
122 sq m / 1317 sq ft



This floorplan is only for illustrative purposes and is not to scale. Measurements of rooms, doors, windows, and any items are approximate and no responsibility is taken for any error, omission or mis-statement. Icons of items such as bathroom suites are representations only and may not look like the real items. Made with Made Snappy 360.

Viewings

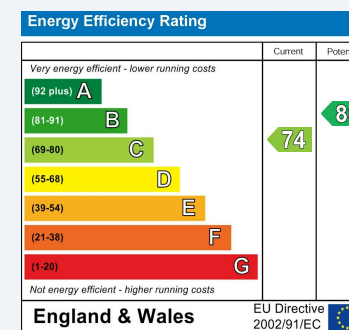
Please contact wigston@hunters.com, if you wish to arrange a viewing appointment for this property or require further information.

Valuations

For a valuation of your property, please email the team with your property details, contact information and the times you are available.

ENERGY PERFORMANCE CERTIFICATE

The energy efficiency rating is a measure of the overall efficacy of a home. The higher the rating the more energy efficient the home is and the lower the fuel bills will be.



These particulars are intended to give a fair and reliable description of the property but no responsibility for any inaccuracy or error can be accepted and do not constitute an offer or contract. We have not tested any services or appliances (including central heating if fitted) referred to in these particulars and the purchasers are advised to satisfy themselves as to the working order and condition. If a property is unoccupied at any time there may be reconnection charges for any switched off/disconnected or drained services or appliances - All measurements are approximate.

THINKING OF SELLING? If you are thinking of selling your home or just curious to discover the value of your property, Hunters would be pleased to provide free, no obligation sales and marketing advice. Even if your home is outside the area covered by our local offices we can arrange a Market Appraisal through our national network of Hunters estate agents.